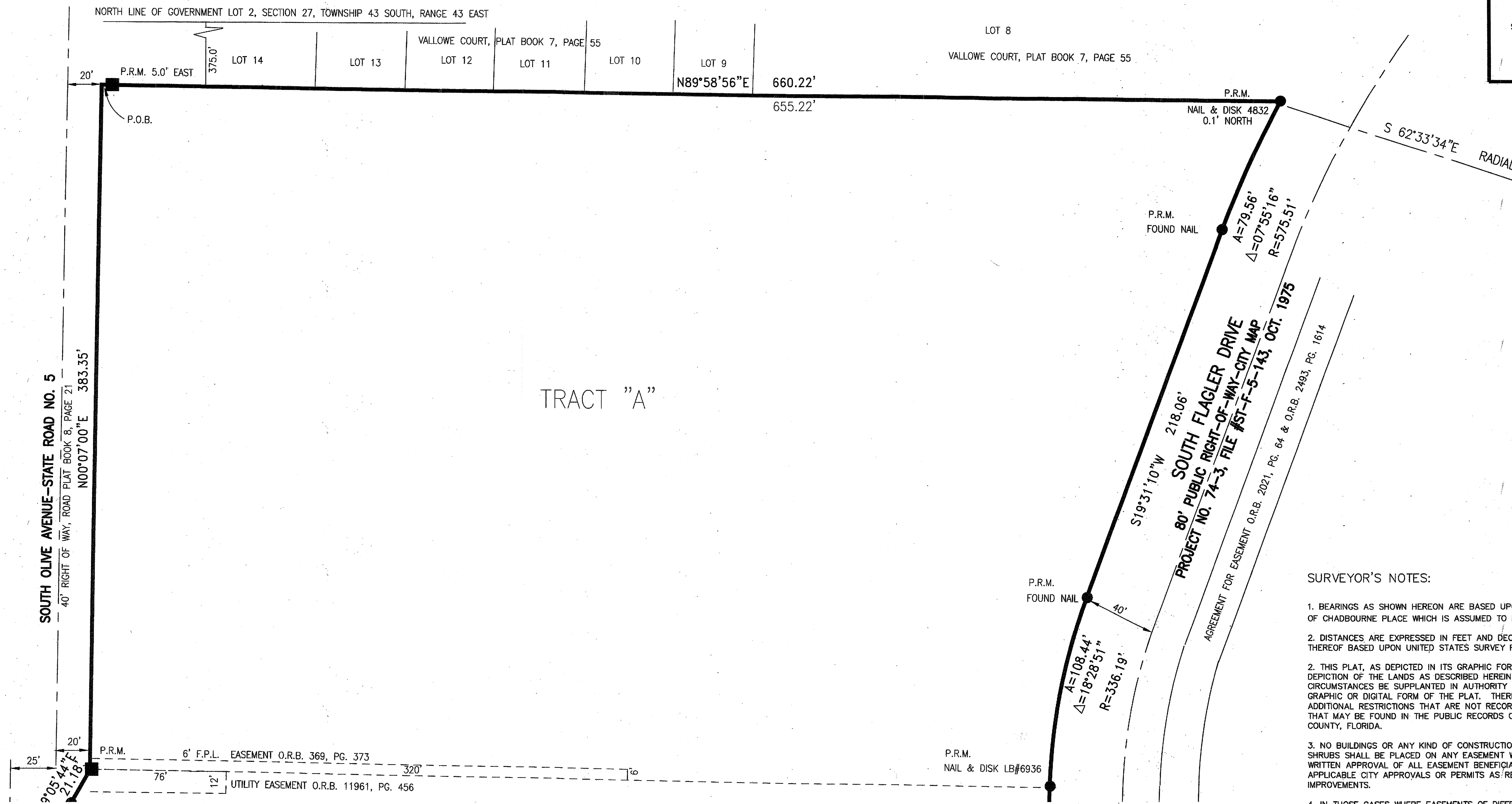


# FIRST BAPTIST CHURCH OF WEST PALM BEACH

LYING IN SECTION 27, TOWNSHIP 43 SOUTH, RANGE 43 EAST  
 CITY OF WEST PALM BEACH, PALM BEACH COUNTY, FLORIDA  
 BEING A REPLAT OF A PORTION OF CHADBOURNE COURT RECORDED IN PLAT BOOK 2, PAGE 88  
 AND A PORTION OF JEFFERSON PARK RECORDED IN PLAT BOOK 1, PAGE 90 OF THE  
 PUBLIC RECORDS OF PALM BEACH COUNTY, FLORIDA.  
 JANUARY, 2015 SHEET 2 OF 3

# 136

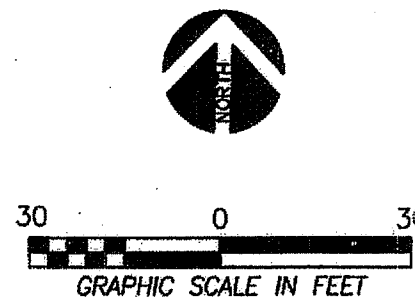
State of Florida  
 County of Palm Beach  
 This Plat was filed for  
 Record this \_\_\_\_\_ Day  
 of \_\_\_\_\_, A.D. 2014  
 and duly recorded in  
 Plat Book \_\_\_\_\_ on  
 Page \_\_\_\_\_  
 Sharon Back, Clerk & Comptroller  
 by: \_\_\_\_\_, D.C.  
 Seal of Clerk & Comptroller



MATCH LINE SEE SHEET 3 of 3

- SURVEYOR'S NOTES:**
- BEARINGS AS SHOWN HEREON ARE BASED UPON THE CENTERLINE OF CHADBOURNE PLACE WHICH IS ASSUMED TO BEAR  $S89^{\circ}52'46''E$ .
  - DISTANCES ARE EXPRESSED IN FEET AND DECIMAL PARTS THEREOF BASED UPON UNITED STATES SURVEY FOOT.
  - THIS PLAT, AS DEPICTED IN ITS GRAPHIC FORM, IS THE OFFICIAL DEPICTION OF THE LANDS AS DESCRIBED HEREIN AND WILL IN NO CIRCUMSTANCES BE SUPPLANTED IN AUTHORITY BY ANY OTHER GRAPHIC OR DIGITAL FORM OF THE PLAT. THERE MAY BE ADDITIONAL RESTRICTIONS THAT ARE NOT RECORDED ON THIS PLAT THAT MAY BE FOUND IN THE PUBLIC RECORDS OF PALM BEACH COUNTY, FLORIDA.
  - NO BUILDINGS OR ANY KIND OF CONSTRUCTION OR TREES OR SHRUBS SHALL BE PLACED ON ANY EASEMENT WITHOUT PRIOR WRITTEN APPROVAL OF ALL EASEMENT BENEFICIARIES AND ALL APPLICABLE CITY APPROVALS OR PERMITS AS REQUIRED FOR SUCH IMPROVEMENTS.
  - IN THOSE CASES WHERE EASEMENTS OF DIFFERENT TYPES CROSS OR OTHERWISE COINCIDE, DRAINAGE EASEMENTS SHALL HAVE FIRST PRIORITY, UTILITY EASEMENTS SHALL HAVE SECOND PRIORITY, ACCESS EASEMENTS SHALL HAVE THIRD PRIORITY AND ALL OTHER EASEMENTS SHALL BE SUBORDINATE TO THESE WITH THEIR PRIORITIES BEING DETERMINED BY USE RIGHTS GRANTED.

- LEGEND**
- PRM ■ INDICATES PERMANENT REFERENCE MONUMENT LB#6936
  - PRM ● INDICATES NAIL & DISK LB#6936 SET IN CONCRETE
  - ⊙ INDICATES CENTER LINE
  - P.O.B. INDICATES POINT OF BEGINNING
  - R/W INDICATES RIGHT OF WAY
  - P.O.B. INDICATES CENTER LINE
  - P.B. INDICATES PLAT BOOK
  - PG. INDICATES PAGE
  - Δ INDICATES DELTA
  - R INDICATES RADIUS
  - A INDICATES ARC LENGTH



**Dean Surveying and Mapping, Inc.**  
 "The Measuring Line Shall Go Forth" Jeremiah 31:39  
 4201 Weagata Avenue  
 Suite A3  
 West Palm Beach, Florida 33409  
 Tel: (561) 625-8748 Fax: (561) 625-4558  
 FIELD: N/A DATE: OCTOBER 2014  
 DRAWN: D.J.M./C.A.D. SCALE: 1" = 30'  
 SHEET: 2 of 3 JOB No.: 012-1208